

Sample Auto Power Report from PSM Report Writer

This report, complete with tabular summary and log graphs, is produced by the PSM software "Report Writer" function. It was generated automatically in a couple of mouse clicks without multiple operations or tedious cutting and pasting. The report can be edited and customized, and saved as a .doc or .pdf file.

This software is **free** to download and **free** of license restrictions to permit sharing of survey data (.log files) and easier collaboration between multiple users. ☺

Go here to download latest release of PSM Software:

<http://www.powersight.com/HTML/DOWNLOADS/software.html>

All data is exportable to **Excel**. The Report Writer has two modes:

1) Summary Mode shown below,

2) Comparison Mode for comparing the results of two studies done at different times, such as for rebalancing panels, after adding new loads or circuits, energy savings verification etc.

Go here to see: [Example of a Comparison Report:](#)

http://www.powersight.com/FILES/SAMPLE_REPORTS/Comparison%20Report%20Sample.

Power Audit Data

File C:\PowerSight\files\anypowersightmeter\powerstudy.log

Test began at 5/23/06 6:50:00

Test ended at 5/30/06 13:56:00

<u>Measurement</u>	<u>Value</u>	<u>Units</u>
Voltage, Phase 1, Ave:	281.0	volts
Voltage, Phase 1, Max:	285.3	volts
Voltage, Phase 1, Min:	275.0	volts
Voltage, Phase 2, Ave:	281.7	volts
Voltage, Phase 2, Max:	285.5	volts
Voltage, Phase 2, Min:	275.8	volts
Voltage, Phase 3, Ave:	281.5	volts
Voltage, Phase 3, Max:	302.5	volts
Voltage, Phase 3, Min:	275.5	volts
Current, Phase 1, Ave:	147.6	amps
Current, Phase 1, Max:	454.1	amps
Current, Phase 1, Min:	40.3	amps
Current, Phase 2, Ave:	146.7	amps
Current, Phase 2, Max:	436.4	amps
Current, Phase 2, Min:	39.3	amps
Current, Phase 3, Ave:	131.4	amps
Current, Phase 3, Max:	403.8	amps
Current, Phase 3, Min:	38.4	amps
Current, Neutral, Ave:	36.1	amps
Current, Neutral, Max:	105.8	amps
Current, Neutral, Min:	9.6	amps
True Power, Phase 1, Ave:	39533.7	Watts
True Power, Phase 1, Max:	104140.8	Watts
True Power, Phase 1, Min:	10067.2	Watts
True Power, Phase 2, Ave:	39898.3	Watts

True Power, Phase 2, Max:	104192.0	Watts
True Power, Phase 2, Min:	9696.0	Watts
True Power, Phase 3, Ave:	35030.3	Watts
True Power, Phase 3, Max:	93388.8	Watts
True Power, Phase 3, Min:	8480.0	Watts
Total True Power Ave:	114453.4	Watts
Total True Power Max:	301721.6	Watts
Total True Power Min:	29440.0	Watts
VA Power, Phase 1, Ave:	41471.6	VA
VA Power, Phase 1, Max:	125081.6	VA
VA Power, Phase 1, Min:	11334.4	VA
VA Power, Phase 2, Ave:	41316.2	VA
VA Power, Phase 2, Max:	120678.4	VA
VA Power, Phase 2, Min:	11065.6	VA
VA Power, Phase 3, Ave:	36984.2	VA
VA Power, Phase 3, Max:	111718.4	VA
VA Power, Phase 3, Min:	10848.0	VA
Total VA Power Ave:	119764.6	VA
Total VA Power Max:	357529.6	VA
Total VA Power Min:	33945.6	VA
Power Factor, Phase 1, Ave:	0.95	
Power Factor, Phase 1, Max:	1.00	
Power Factor, Phase 1, Min:	0.70	
Power Factor, Phase 2, Ave:	0.96	
Power Factor, Phase 2, Max:	1.00	
Power Factor, Phase 2, Min:	0.70	
Power Factor, Phase 3, Ave:	0.94	
Power Factor, Phase 3, Max:	0.99	
Power Factor, Phase 3, Min:	0.57	
Total Power Factor:	0.96	
Frequency, Ave:	60.0	Hz
Frequency, Max:	60.1	Hz
Frequency, Min:	59.8	Hz
THD, Voltage, Phase 1:	1.5	%
THD, Voltage, Phase 2:	1.6	%
THD, Voltage, Phase 3:	1.5	%
THD, Current, Phase 1:	11.3	%
THD, Current, Phase 2:	11.4	%
THD, Current, Phase 3:	10.5	%
THD, Current, Neutral:	197.3	%
Energy, Phase 1:	6922.34496	KWH
Energy, Phase 2:	6986.19520	KWH
Energy, Phase 3:	6133.80608	KWH
Energy, Total Elapsed:	20042.34624	KWH
Energy, estimated per month:	83614.7	KWH
Cost, Total Elapsed:	\$2605.50	\$
Cost, estimated per month:	\$10869.91	\$
(at \$0.13000/KWH)		
Peak Demand:	215756.8	Watts @ 5/26/06 11:41:00
Peak Ave VA:	223283.2	VA @ 5/23/06 20:50:00

Report Prepared By: Kyle Watts
Green Energy Power
1 Joules St
Energy City, CA 99999
Phone: 617-555-5555

Email:

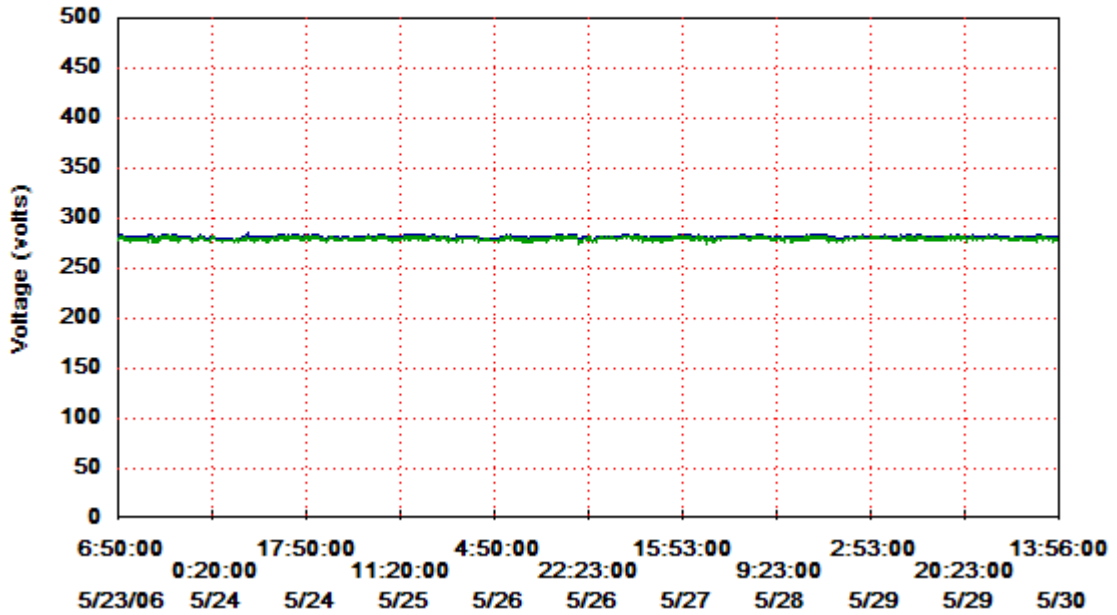
kwatts@gepowerco.com

Sample Power Report

V1n Ave = 280.96

V1n Max = 285.30

V1n Min = 275.00

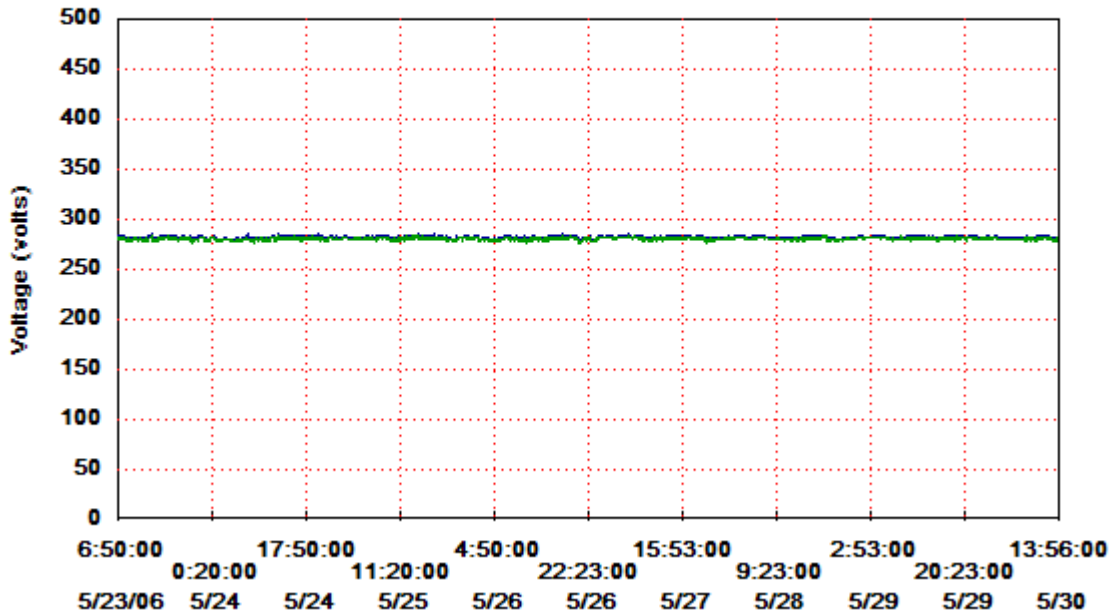


Sample Power Report

V2n Ave = 281.72

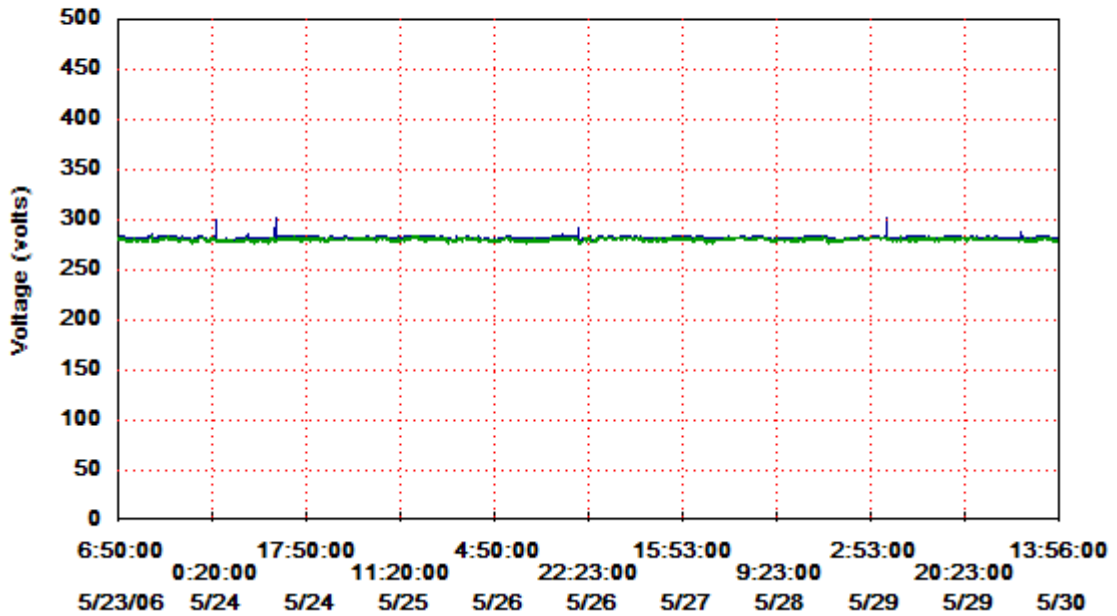
V2n Max = 285.50

V2n Min = 275.80



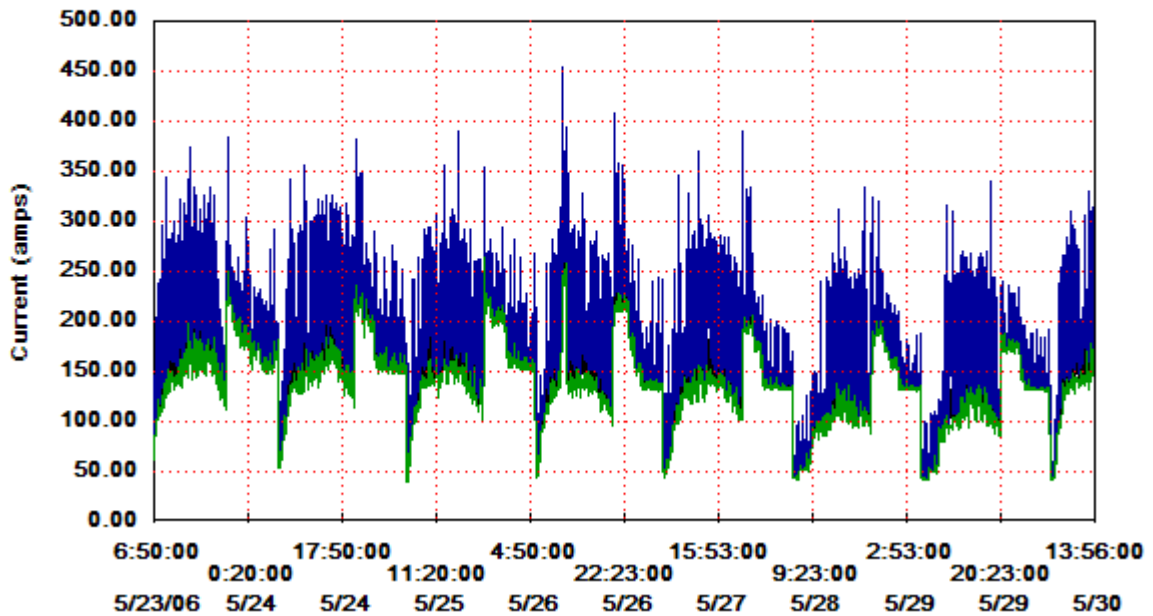
Sample Power Report

V3n Ave = 281.50 V3n Max = 302.50 V3n Min = 275.50



Sample Power Report

I1 Ave = 147.64 I1 Max = 454.08 I1 Min = 40.28

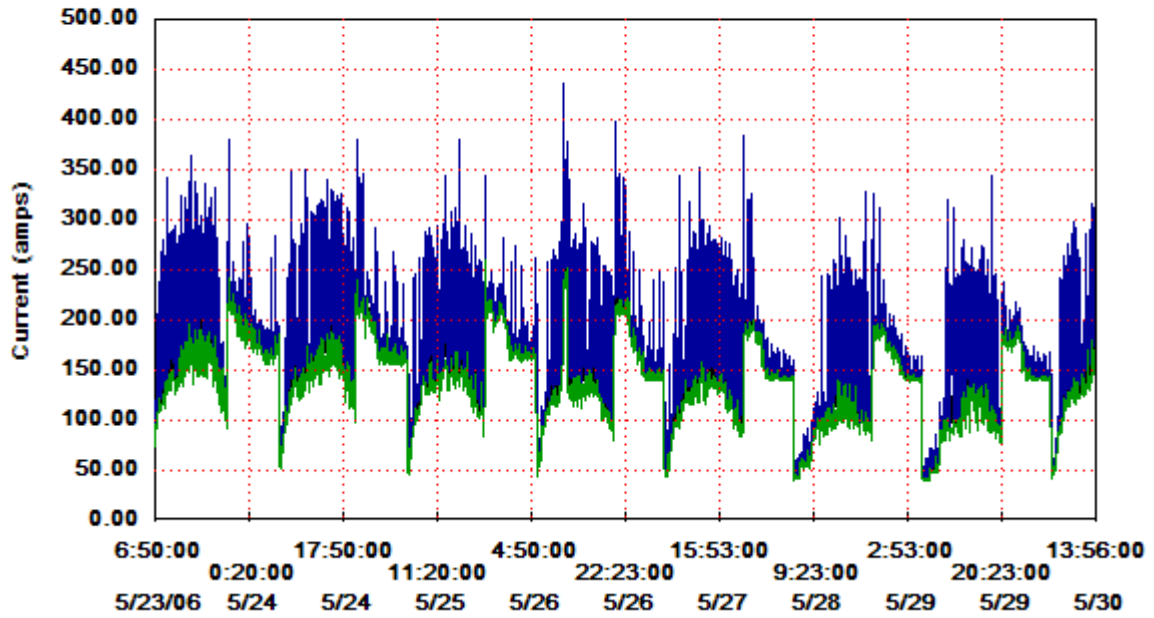


Sample Power Report

□ I2 Ave = 146.67

□ I2 Max = 436.42

□ I2 Min = 39.33

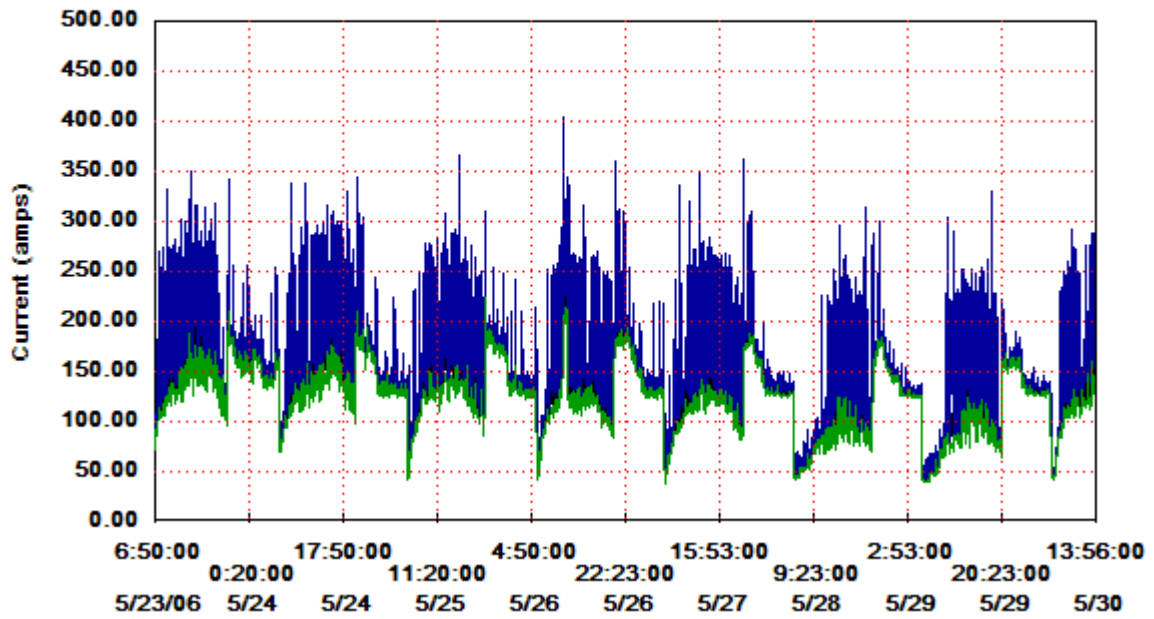


Sample Power Report

□ I3 Ave = 131.37

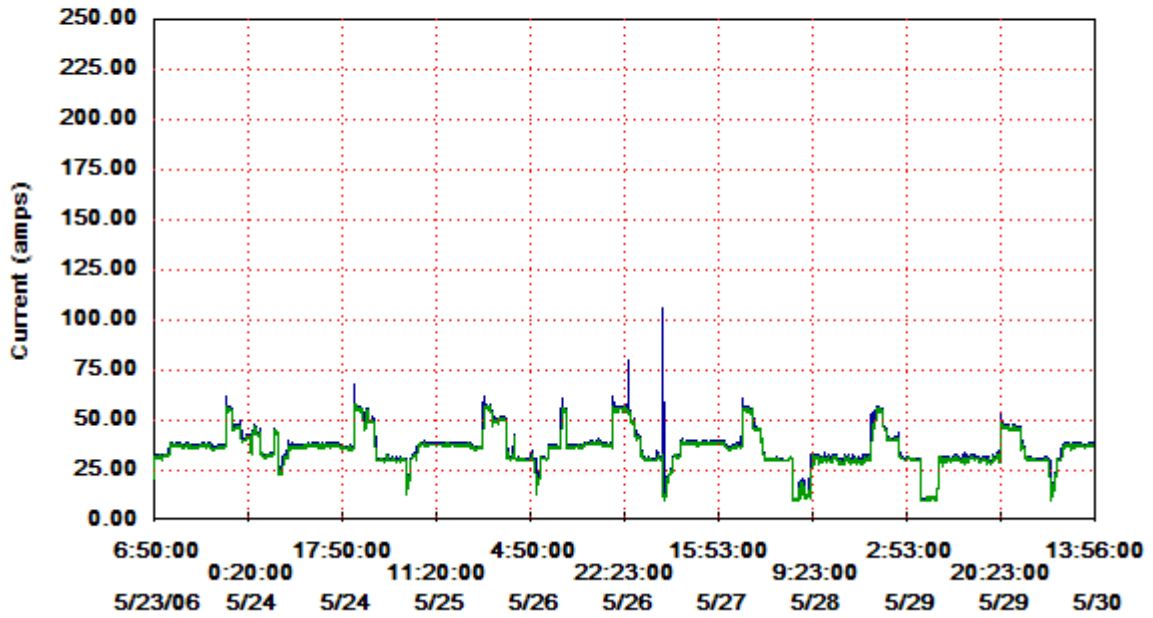
□ I3 Max = 403.78

□ I3 Min = 38.40



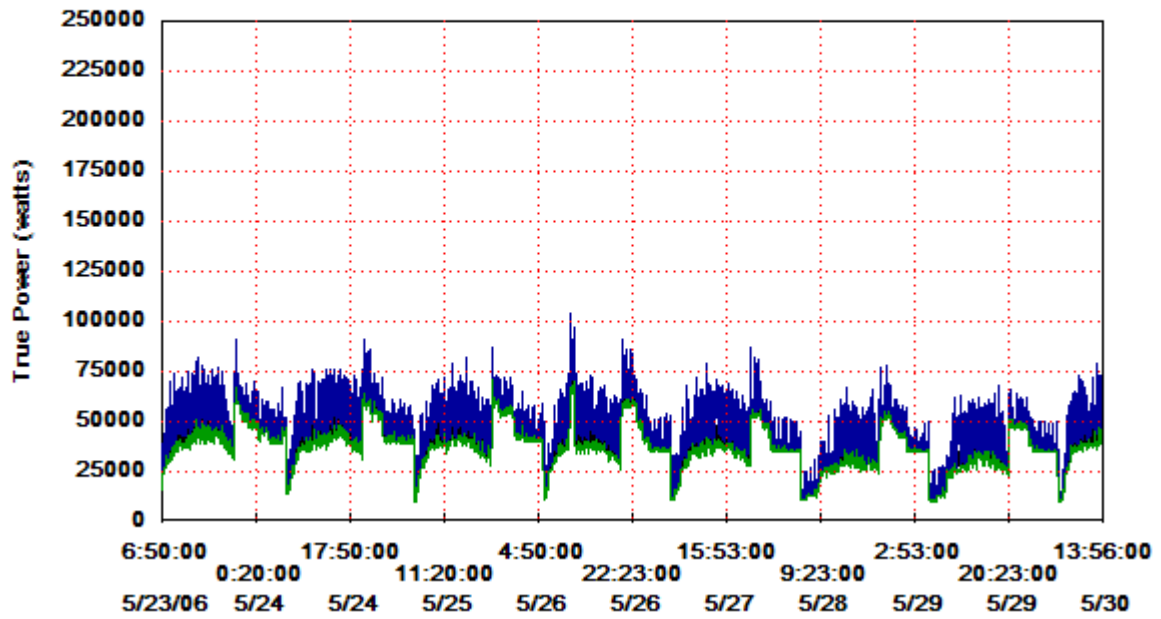
Sample Power Report

In Ave = 36.08 In Max = 105.79 In Min = 9.57



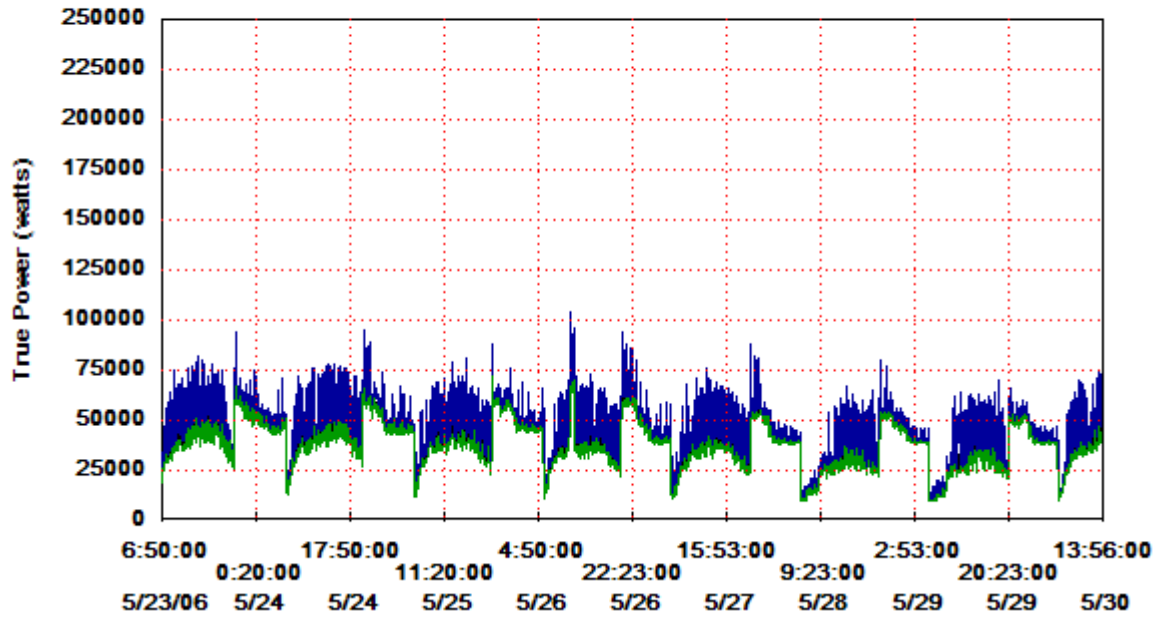
Sample Power Report

Phase 1 Ave = 39534.5 Phase 1 Max = 104140.8 Phase 1 Min = 10067.2



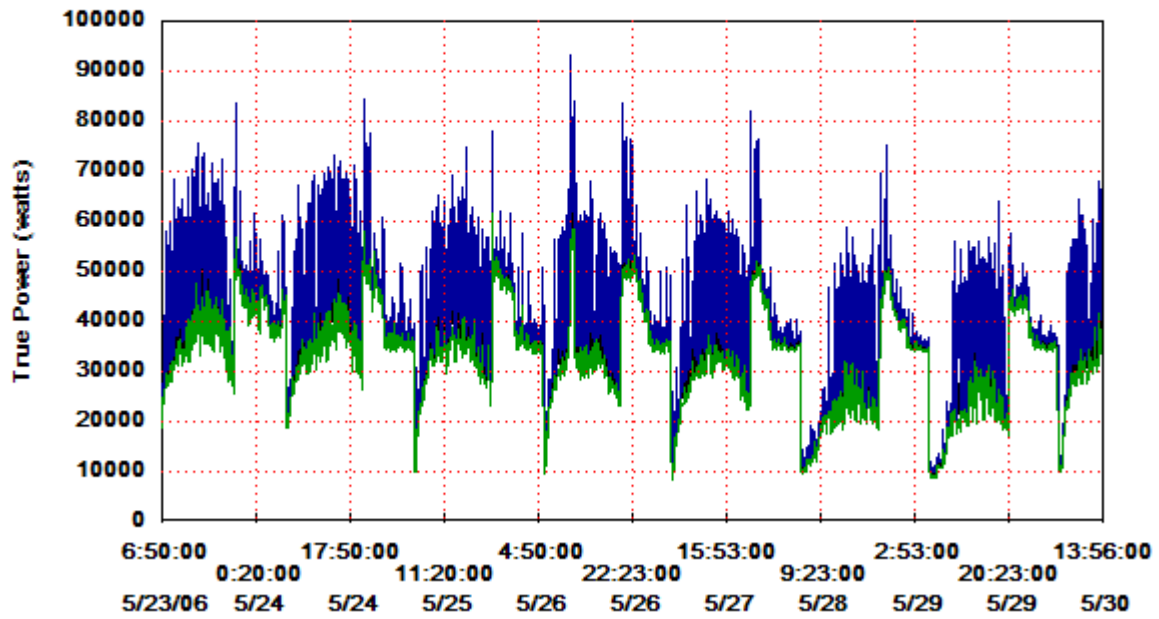
Sample Power Report

Phase 2 Ave = 39898.4 Phase 2 Max = 104192.0 Phase 2 Min = 9696.0



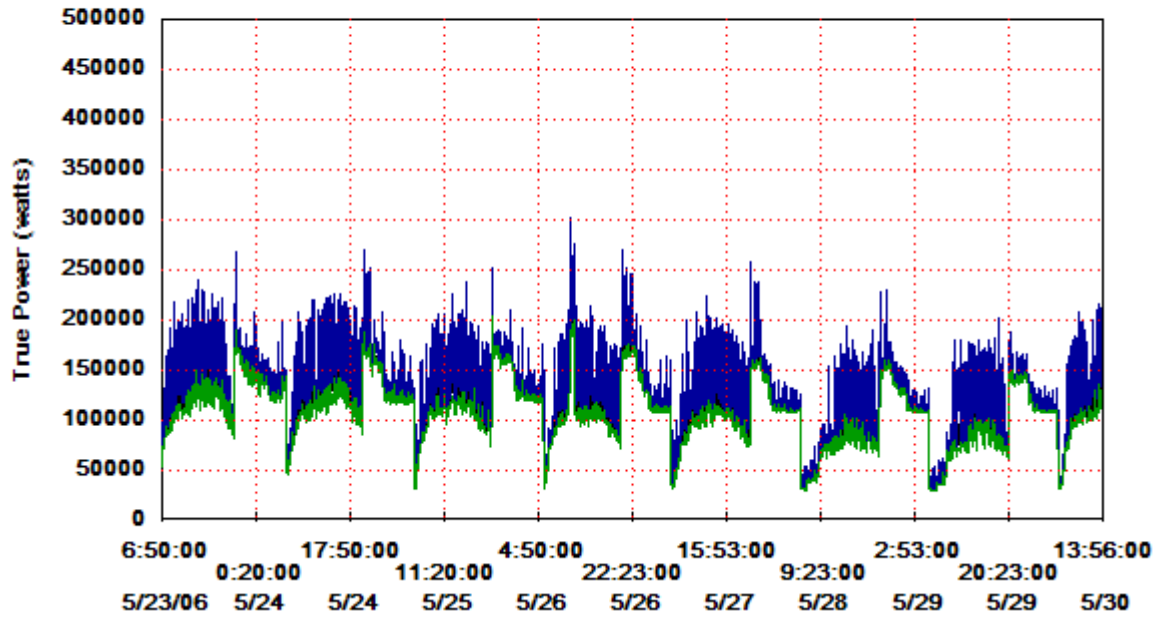
Sample Power Report

Phase 3 Ave = 35030.2 Phase 3 Max = 93388.8 Phase 3 Min = 8480.0



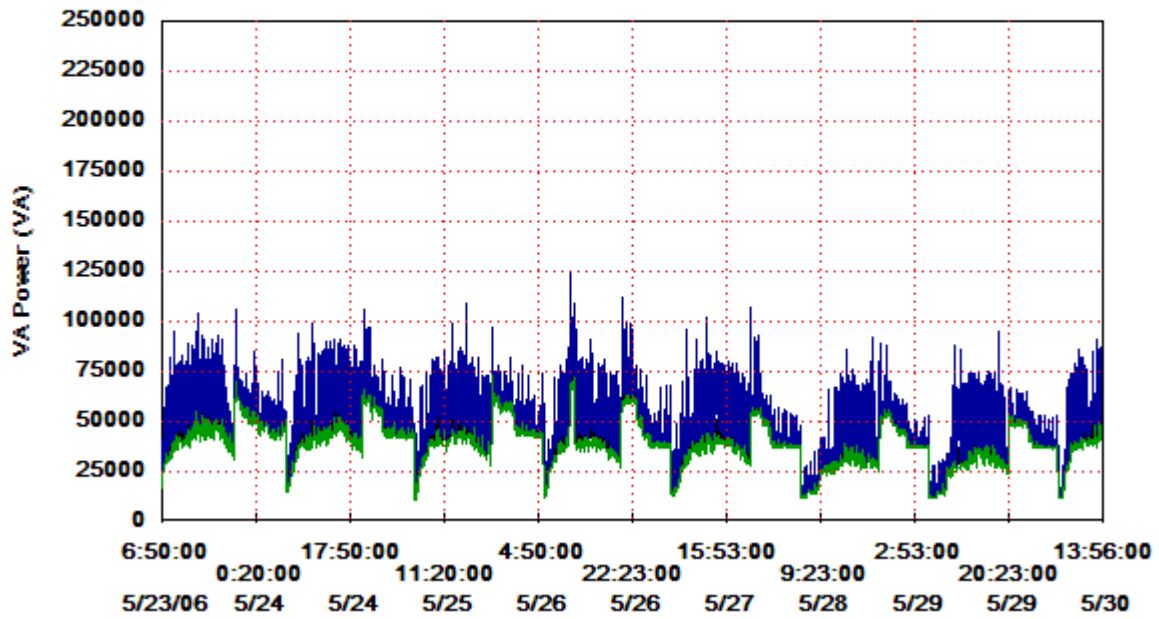
Sample Power Report

Total Ave = 114454.2 Total Max = 301721.6 Total Min = 29440.0



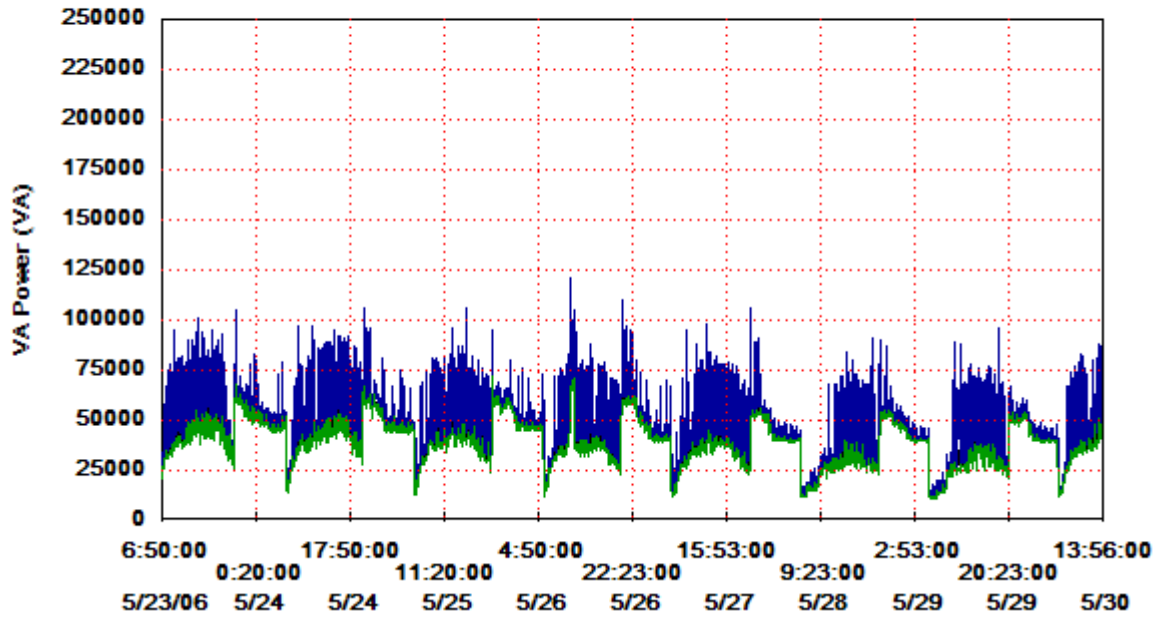
Sample Power Report

Phase 1 Ave = 41472.5 Phase 1 Max = 125081.6 Phase 1 Min = 11334.4



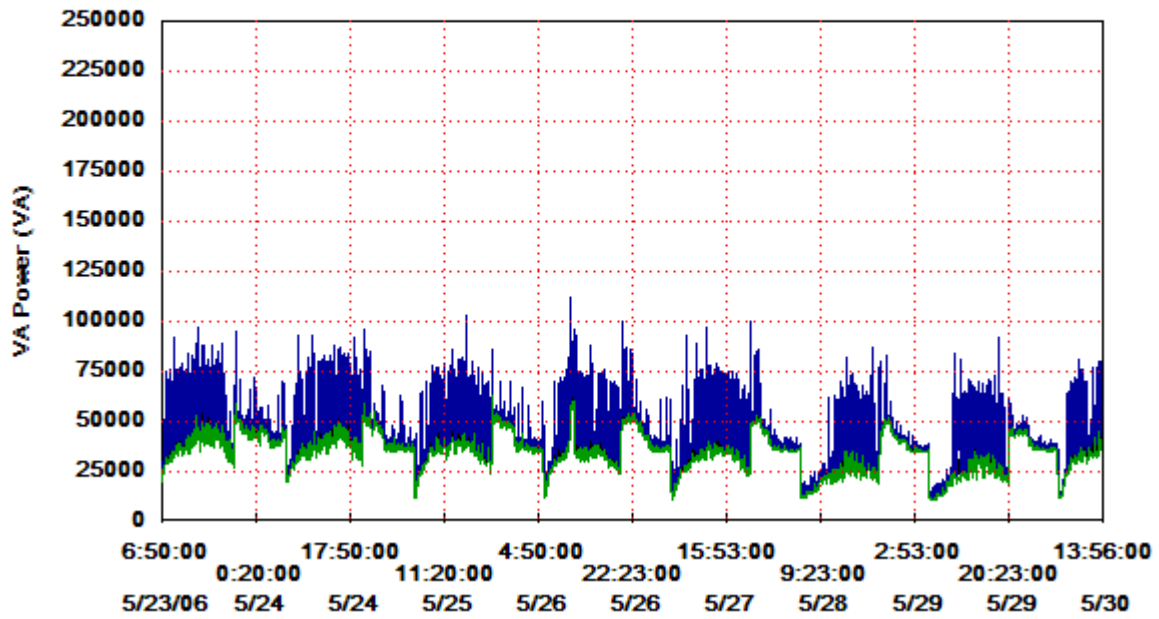
Sample Power Report

Phase 2 Ave = 41316.3 Phase 2 Max = 120678.4 Phase 2 Min = 11065.6



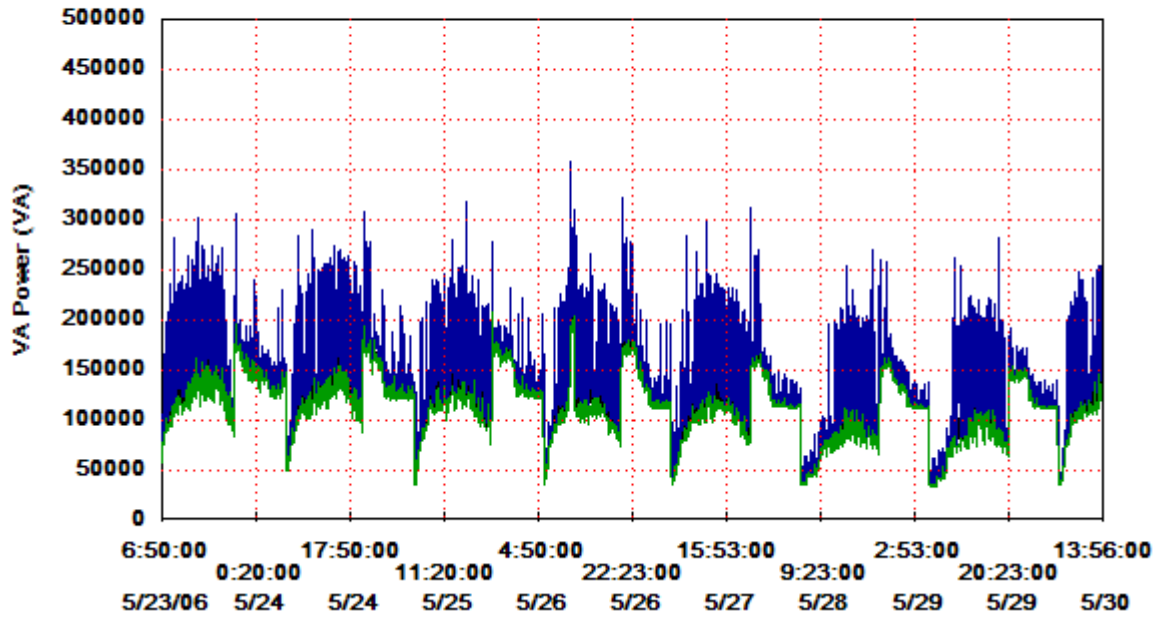
Sample Power Report

Phase 3 Ave = 36984.4 Phase 3 Max = 111718.4 Phase 3 Min = 10848.0



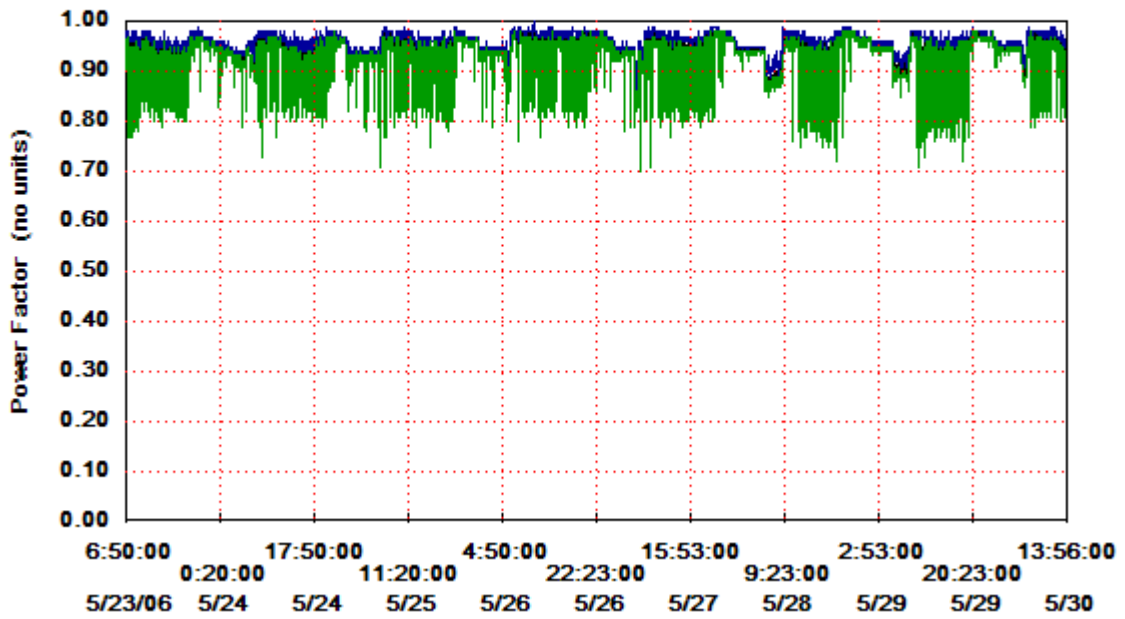
Sample Power Report

Total Ave = 119765.7 Total Max = 357529.6 Total Min = 33945.6



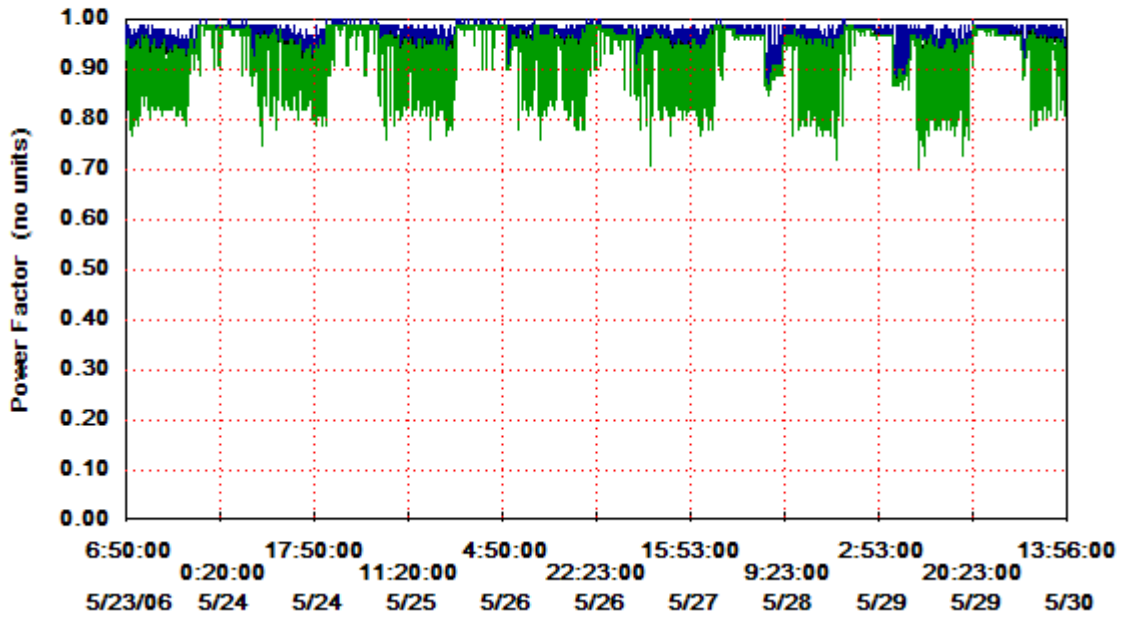
Sample Power Report

Phase 1 Ave = 0.95 Phase 1 Max = 1.00 Phase 1 Min = 0.70



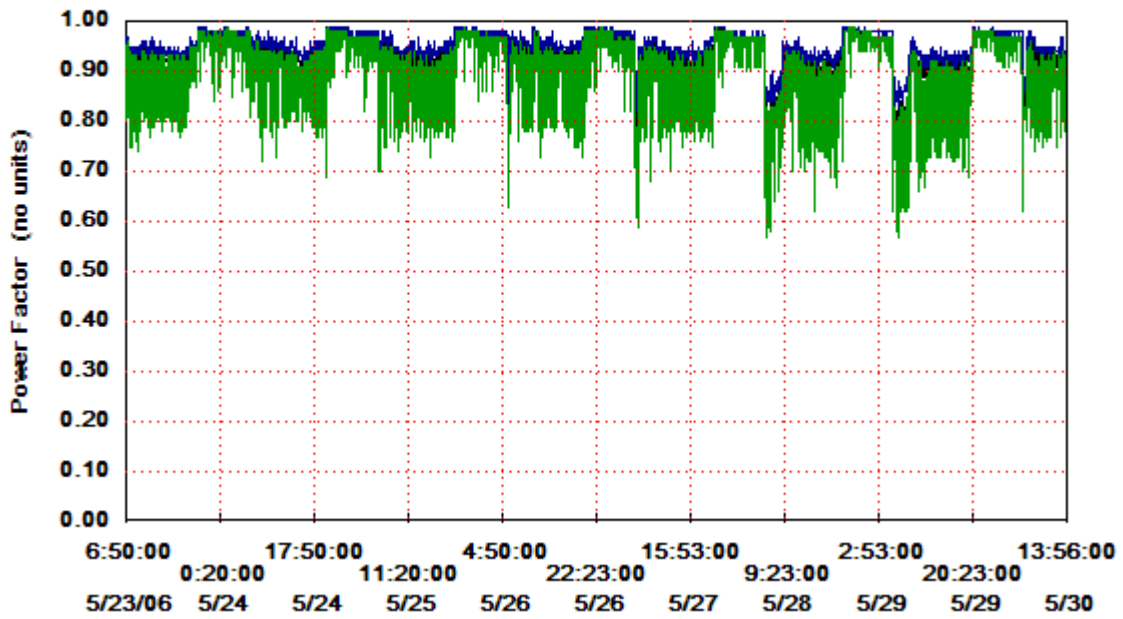
Sample Power Report

Phase 2 Ave = 0.96 Phase 2 Max = 1.00 Phase 2 Min = 0.70



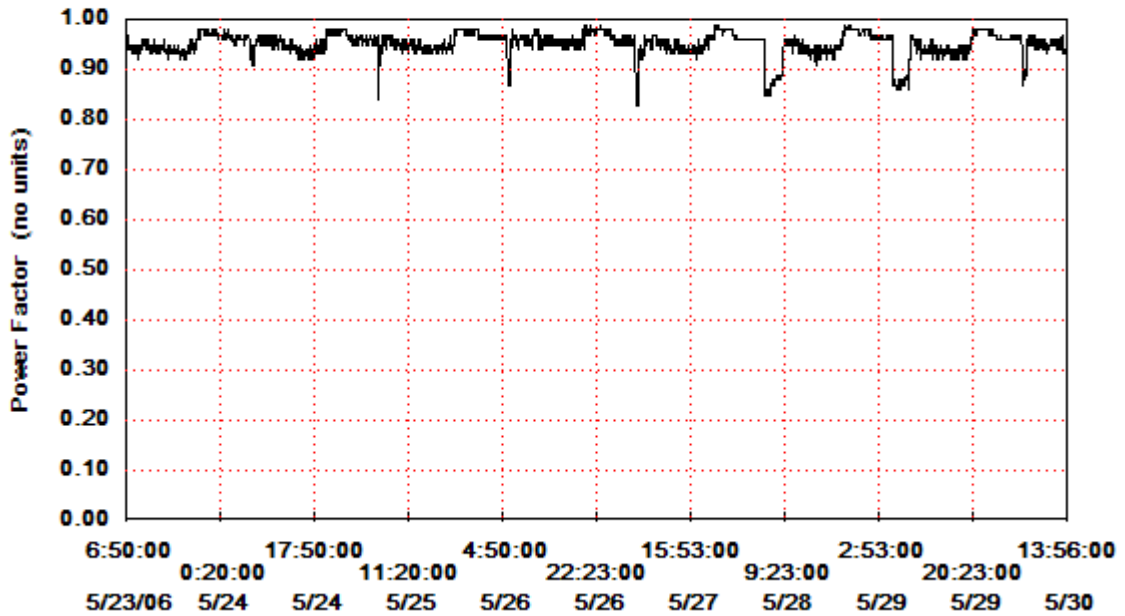
Sample Power Report

Phase 3 Ave = 0.94 Phase 3 Max = 0.99 Phase 3 Min = 0.57



Sample Power Report

Ave Total = 0.95

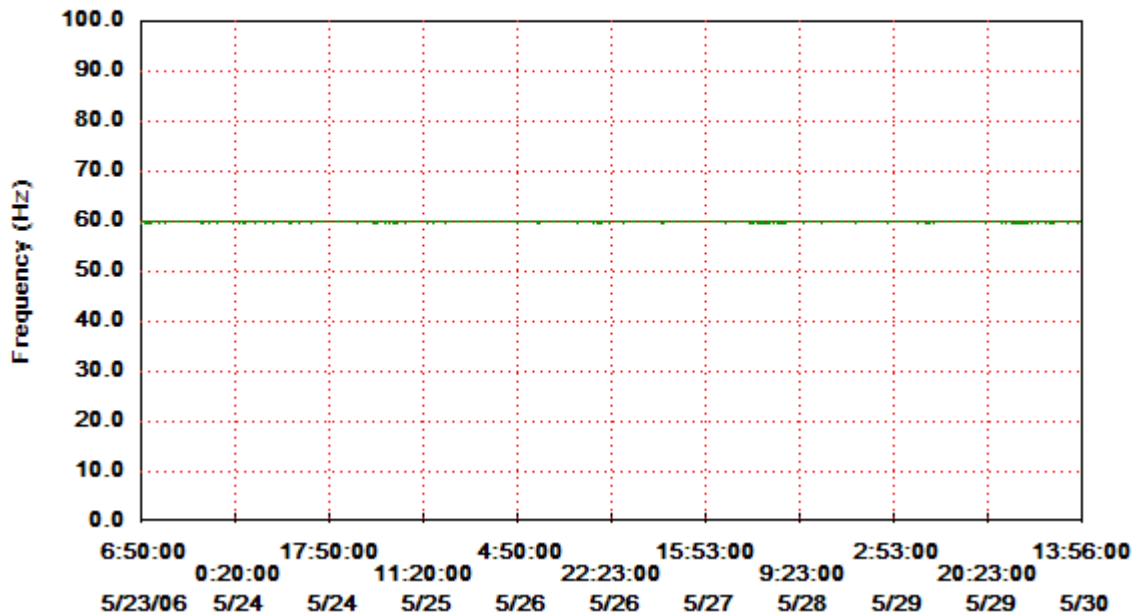


Sample Power Report

Ave Freq = 60.00

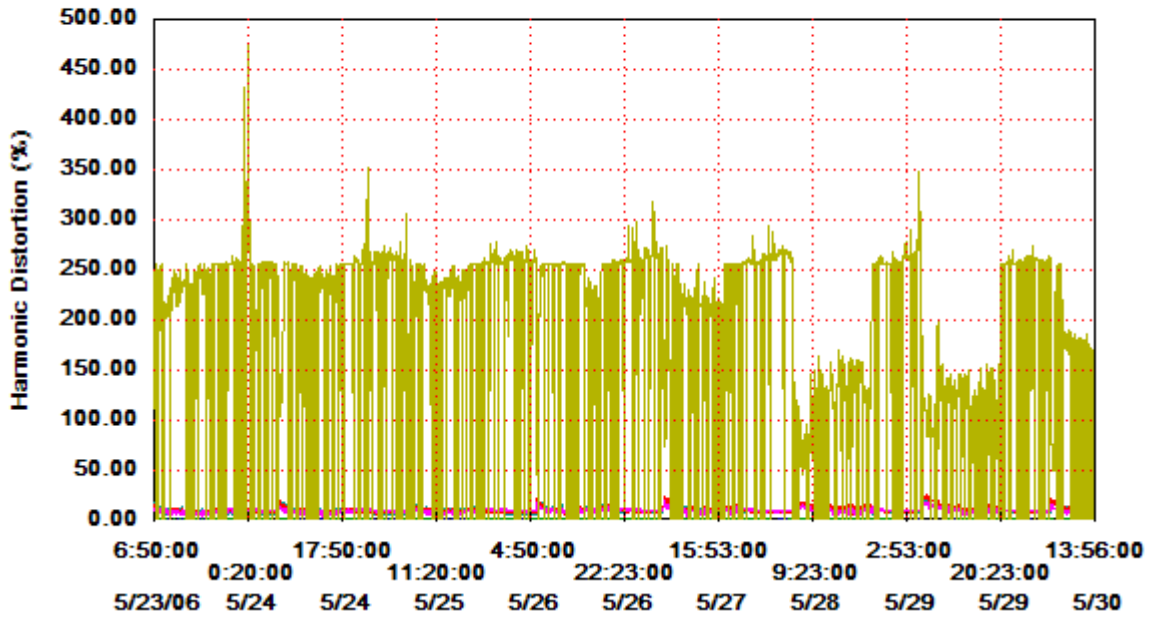
Max Freq = 60.10

Min Freq = 59.80



Sample Power Report

- V1n = 1.50
- V2n = 1.59
- V3n = 1.52
- I1 = 11.28
- I2 = 11.38
- I3 = 10.48
- In = 197.32



Sample Power Report

- Phase 1 = 6923.6
- Phase 2 = 6987.2
- Phase 3 = 6134.6
- Total = 20043.8

